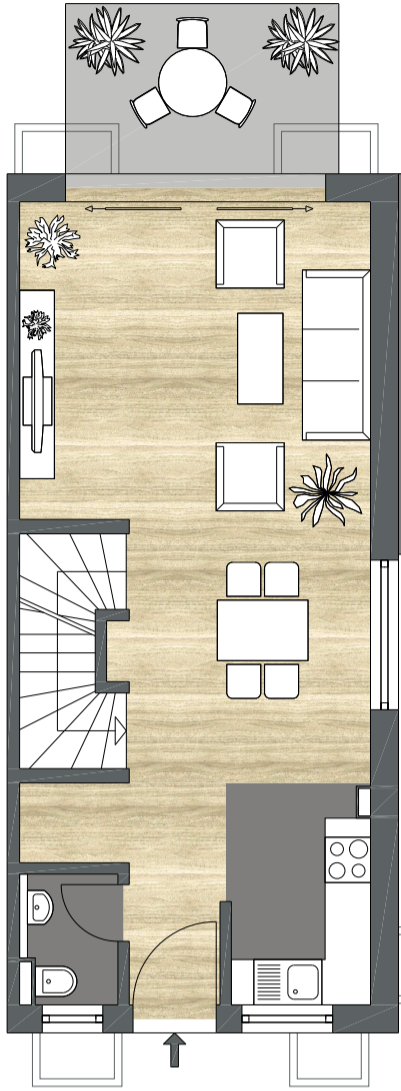


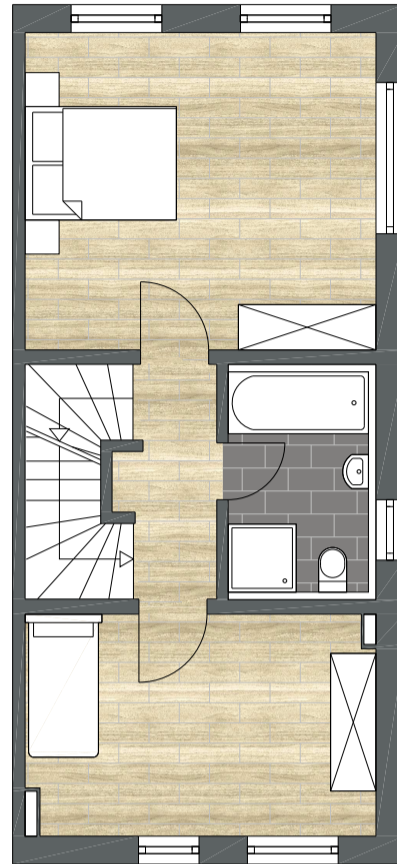
# Haustyp 3 | Breite 5,0 m

ENDHAUS | EINGANG LINKS  
WOHNFLÄCHE 126,99 m<sup>2</sup>



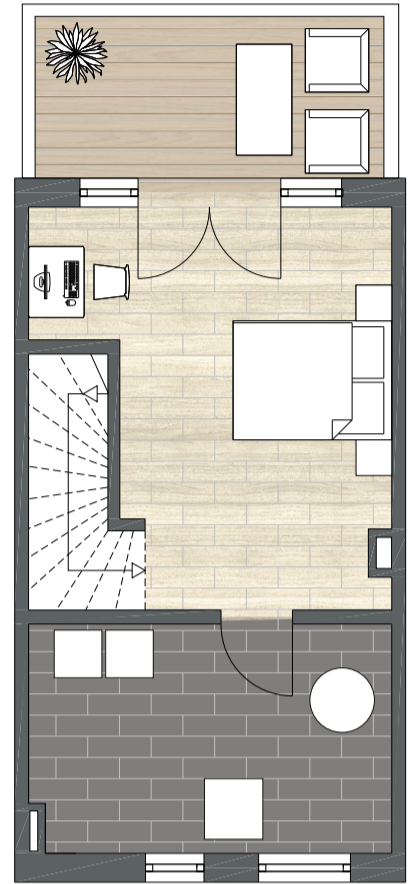
## ERDGESCHOSS

Küche	5,56 m <sup>2</sup>
Diele	3,82 m <sup>2</sup>
WC	1,97 m <sup>2</sup>
Anschlussraum (1,97 m <sup>2</sup> )	0,00 m <sup>2</sup>
Wohnen/Essen	30,98 m <sup>2</sup>
Terrasse (8,23 m <sup>2</sup> )	4,12 m <sup>2</sup>
<b>Wohnfläche EG</b>	<b>46,45 m<sup>2</sup></b>



## OBERGESCHOSS

Flur	4,72 m <sup>2</sup>
Zimmer 1	13,64 m <sup>2</sup>
Bad	6,46 m <sup>2</sup>
Zimmer 2	10,23 m <sup>2</sup>
Zimmer 3	7,44 m <sup>2</sup>
<b>Wohnfläche OG</b>	<b>42,49 m<sup>2</sup></b>



## DACHGESCHOSS

Technik	13,61 m <sup>2</sup>
Zimmer	19,31 m <sup>2</sup>
Terrasse (10,27 m <sup>2</sup> )	5,14 m <sup>2</sup>
<b>Wohnfläche DG</b>	<b>38,06 m<sup>2</sup></b>

