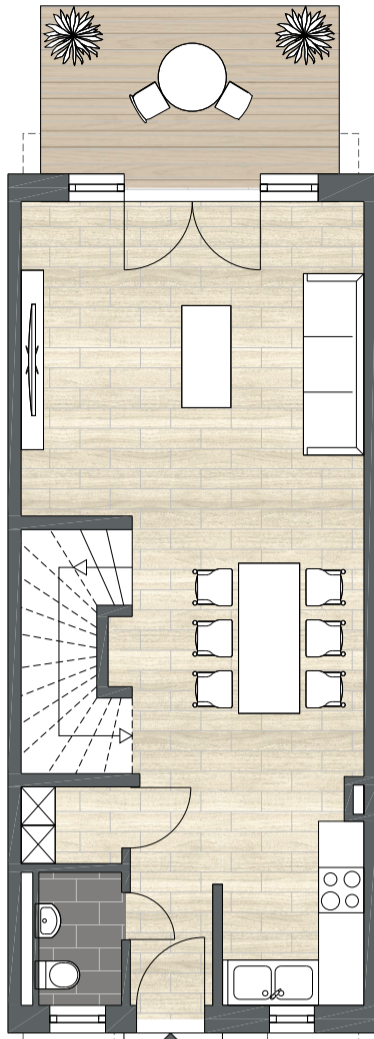


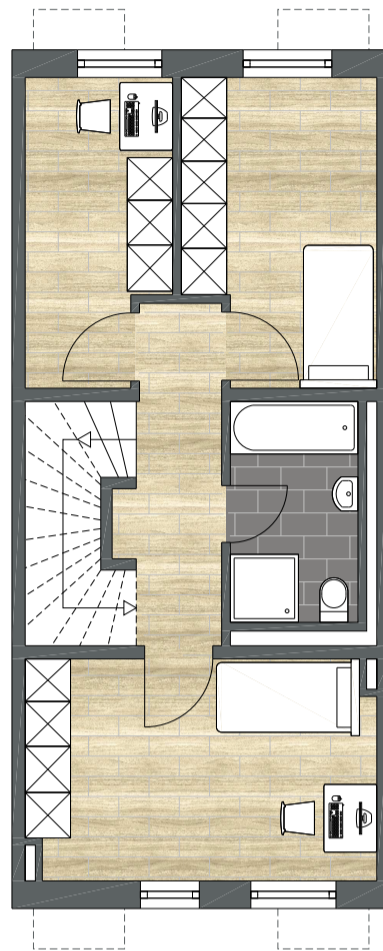
# Haustyp 4 | Breite 5,0 m

MITTELHAUS | EINGANG LINKS  
WOHNFLÄCHE 127,27 m<sup>2</sup>



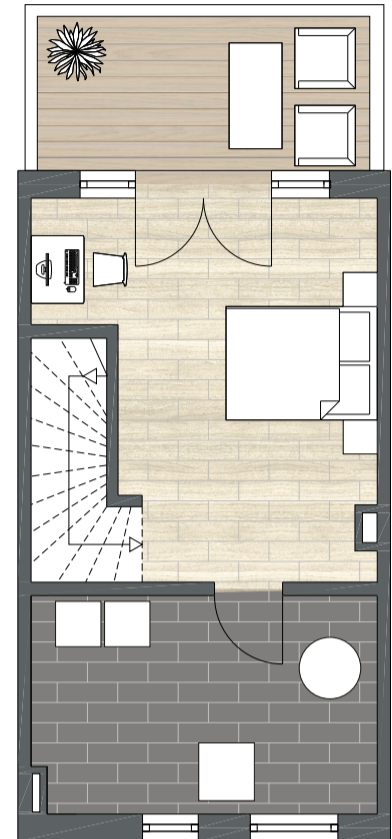
## ERDGESCHOSS

Küche	5,59 m <sup>2</sup>
Diele	3,82 m <sup>2</sup>
WC	1,97 m <sup>2</sup>
Anschlussraum (1,59 m <sup>2</sup> )	0,00 m <sup>2</sup>
Wohnen/Essen	31,06 m <sup>2</sup>
Terrasse (8,23 m <sup>2</sup> )	4,12 m <sup>2</sup>
<b>Wohnfläche EG</b>	<b>46,56 m<sup>2</sup></b>



## OBERGESCHOSS

Flur	4,72 m <sup>2</sup>
Zimmer 1	13,67 m <sup>2</sup>
Bad	6,49 m <sup>2</sup>
Zimmer 2	10,27 m <sup>2</sup>
Zimmer 3	7,44 m <sup>2</sup>
<b>Wohnfläche OG</b>	<b>42,59 m<sup>2</sup></b>



## DACHGESCHOSS

Technik	13,64 m <sup>2</sup>
Zimmer	19,36 m <sup>2</sup>
Terrasse (10,27 m <sup>2</sup> )	5,13 m <sup>2</sup>
<b>Wohnfläche DG</b>	<b>38,13 m<sup>2</sup></b>

